

## 2ND FLOOR PROPOSED FLOOR PLAN

1/4" = 1'-0"

WINDOW SCHEDULE / DOOR SCHEDULE						
(NO.)	DESCRIPTION	UNIT SIZE (IN.)		GLASS	WIND PRESSURES	
		WIDTH	HEIGHT		POSITIVE	NEGATIVE
(Z)	HORIZONTAL SLIDING WINDOW	5'-0"	5'-0"	IMPACT RESISTANT	29.83	32.60
(aa)	HORIZONTAL SLIDING WINDOW	9'-0"	5'-0"	IMPACT RESISTANT	27.98	34.19
(bb)	HORIZONTAL SLIDING WINDOW	6'-0"	5'-0"	IMPACT RESISTANT	32.90	33.02
(cc)	HORIZONTAL SLIDING WINDOW	8'-0"	5'-0"	IMPACT RESISTANT	31.15	33.93
(dd)	FIXED WINDOW	5'-0"	8'-0"	IMPACT RESISTANT	32.60	35.38
(ee)	HORIZONTAL SLIDING WINDOW	6'-0"	5'-0"	IMPACT RESISTANT	32.60	35.38
(ff)	CASEMENT WINDOW	3'-0"	5'-0"	IMPACT RESISTANT	27.98	34.19
(gg)	CASEMENT WINDOW	3'-0"	5'-0"	IMPACT RESISTANT	32.53	33.28
(hh)	FIXED WINDOW	6'-0"	2'-0"	IMPACT RESISTANT	32.60	35.38
(ii)	FIXED WINDOW	5'-0"	8'-0"	IMPACT RESISTANT	32.16	34.93
(jj)	HORIZONTAL SLIDING WINDOW	8'-0"	5'-0"	IMPACT RESISTANT	31.15	33.93
(kk)	CASEMENT WINDOW	3'-0"	5'-0"	IMPACT RESISTANT	32.60	35.38
(ll)	HORIZONTAL SLIDING WINDOW	10'-0"	5'-0"	IMPACT RESISTANT	32.60	35.38
(mm)	CASEMENT WINDOW	3'-0"	5'-0"	IMPACT RESISTANT	27.98	34.19
(nn)	CASEMENT WINDOW	3'-0"	3'-0"	IMPACT RESISTANT	32.53	33.28
(oo)	HORIZONTAL SLIDING WINDOW	8'-0"	5'-0"	IMPACT RESISTANT	31.15	33.93

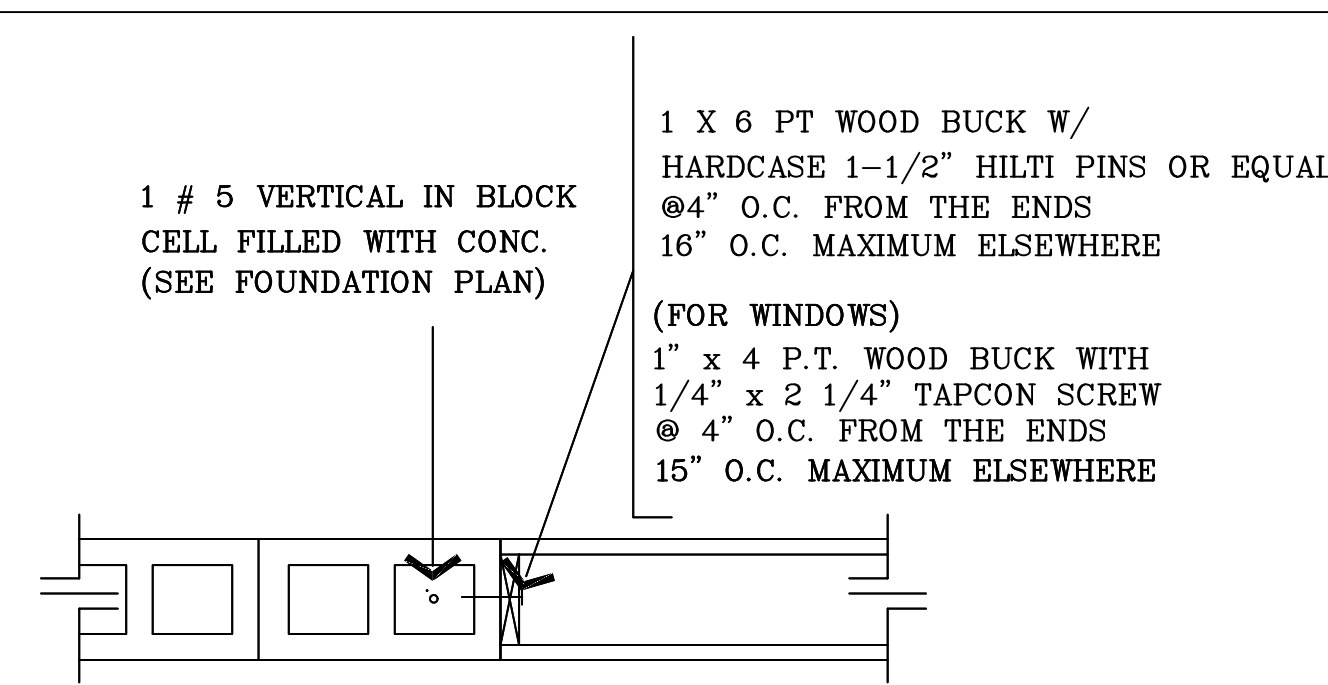
## WALL LEGEND

- NEW 8" CBS WALL
- 6" WOOD BEARING WALL
- 4" INTERIOR PARTITION

## FLASHING NOTE

ALL WINDOW AND DOORS  
FLASHING TO COMPLY WITH 703.4 & R609.1  
CHAPTER 19-113 AND FBC 7TH EDITION 2020  
PRODUCT TREMCO VULKEM 116.

## FLORIDA BUILDING CODE 2020 7TH EDITION



DOOR/WINDOW BUCK DETAIL SCALE: N.T.S.

## APT #1 BEDROOM / BATH COUNT

NUMBER OF BEDROOMS	4
NUMBER OF OFFICES	1
NUMBER OF BATHROOMS	3

## APT #2 BEDROOM / BATH COUNT

NUMBER OF BEDROOMS	4
NUMBER OF OFFICES	1
NUMBER OF BATHROOMS	5

## APT #3 BEDROOM / BATH COUNT

NUMBER OF BEDROOMS	4
NUMBER OF OFFICES	0
NUMBER OF BATHROOMS	3

REVISIONS	DATE
1	
2	
3	
4	
5	

CARL G. FORBES PE  
LICENSE NO. 13129  
NO. 20699  
STATE OF FLORIDA  
PROFESSIONAL ENGINEER

ENGINEER OF RECORD  
CARL G. FORBES PE  
1839 S DIXIE HWY.  
POMPANO BEACH, FLORIDA 33060  
EMAIL: CARLOS@BELLSOUTH.NET  
PHONE: 954-682-6851 FAX: 954-682-4284  
STATE OF FLORIDA LICENSE PE 20699

NEW CONSTRUCTION  
PROPERTY ADDRESS:  
1300 N RIVERSIDE DRIVE  
POMPANO BEACH BEACH, FLORIDA

BEFORE A REPRESENTATIVE OF THE STATE OF FLORIDA DEPARTMENT OF REVENUE, I, CARLOS VILACA, ASSOCIATES USA, INC., A LIMITED LIABILITY COMPANY, DO HEREBY CERTIFY THAT THE ABOVE INFORMATION IS TRUE AND CORRECT TO THE BEST OF MY KNOWLEDGE AND BELIEF. I AM NOT PROVIDING ANY GUARANTEE OR WARRANTY OF ANY KIND, AND I AM NOT PROVIDING ANY SERVICE TO ANY OTHER PARTY. I AM NOT PROVIDING ANY SERVICE TO ANY OTHER PARTY.

PLANS DRAWN BY  
CARLOS VILACA & ASSOCIATES USA  
1835 S DIXIE HWY.  
POMPANO BEACH, FLORIDA 33060  
PHONE: 561-445-9661  
EMAIL: carlosvilaca@gmail.com

DRAWN BY: FS  
CARLOS VILACA  
1835 S DIXIE HWY.  
POMPANO BEACH, FLORIDA 33060  
PHONE: 561-445-9661  
EMAIL: carlosvilaca@gmail.com

DATE: 7-25-2022  
SCALE: 1/4" = 1'-0"  
PROJECT: RIVERSIDE TOWNHOUSES

SHEET  
A4